

Groundwater Data Loggers

Dataloggers

For accurate continuous measurement of water levels, temperature and conductivity in boreholes.



Levelloggers (total pressure)



Mini logger (vented)



Levellogger data transfer

CPD ENDORSED DATA LOGGER PRACTICAL TRAINING WORKSHOPS

Waterra's datalogger workshops are designed to provide practical training in the use and deployment of data loggers for field applications. See website for dates and booking details.



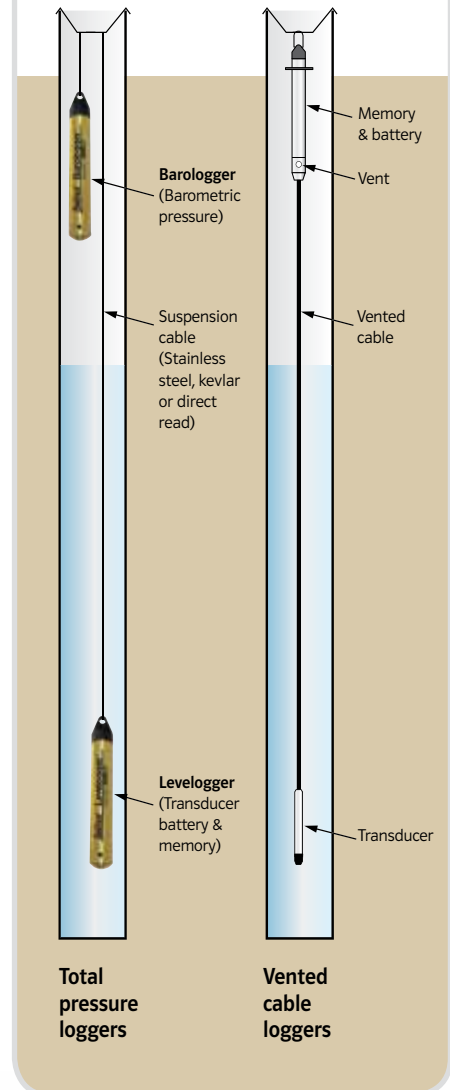
Endorsed by the Geological Society
Endorsement No.126



Typical datalogging setup



Data downloaded via optical reader or via direct read cable



Total pressure loggers

Vented cable loggers

Groundwater Data Loggers

Dataloggers



Levellogger Gold



Levellogger Junior



LTC Levellogger Junior



Mini logger



Rainlogger

	Levellogger Gold	Levellogger Junior	LTC Levellogger Junior	Mini logger	Rainlogger
Type of logger	Total pressure	Total pressure	Total pressure	Vented	Counter
Level					
Pressure transducer	Piezoresistive Silicon in 316L Stainless Steel	Piezoresistive Silicon in 316L Stainless Steel	Piezoresistive Silicon in 316L Stainless Steel		
Calibrated ranges	5, 10, 20, 30, 100 m	5, 10 m	10, 30 m	10 to 100 m	
Accuracy (typical)	0.05 % FS	0.1 % FS	0.1 % FS	± 0.1 % FS	
Temp					
Temp compensation range	- 10 to + 40°C	- 10 to + 40°C	- 10 to + 40°C		
Temperature sensor	Platinum RTD	Platinum RTD	Platinum RTD		
Temperature accuracy	± 0.05 °C	± 0.1 °C	± 0.1 °C		
Conductivity					
Conductivity sensor			4 electrode platinum		
Range			0 - 80,000 µS/cm		
Accuracy			2 % of reading		
Resolution			1 µS		
Temp compensation range			0° to 40°C		
General					
Operating temperature range	- 20 to + 80 °C	- 20 to + 80 °C	- 20 to + 80 °C	- 5 to + 50 °C	- 20 to + 80 °C
Battery life	10 years (1 reading/min)	5 years (1 reading/min)	5 years (5 minute sampling)	Replaceable lithium	10 years (2 parameters/10 min)
Size (mm)	22 x 154	22 x 140	22 x 190	10 x 84.3 (transducer) 240 x 24 (logger)	22 x 175
Weight (grams)	179	154	200	50 (transducer) 250 (logger)	135
Memory	40,000 readings	32,000 readings	16,000 sets	500,000 values	40,000 readings
Logging rates	0.5 sec to 99 hours	0.5 sec to 99 hours	5 sec to 99 hours	0.5 sec to 24 hours	5 mins to 99 hours
Logging modes	Linear, event & scheduler	Linear	Linear	Linear or event based	Linear
Barometric compensation	Barologger	Barologger	Barologger / software wizard	Vented cable	N/A
Corrosion resistant coating	Zirconium nitride	-	-	-	-
Clock accuracy	± 1 minute per year	± 1 minute per year	± 1 minute per year	-	± 1 minute per year
Warranty (Years)	3	1	1	1	3

Levelloggers – Total Pressure Loggers

Data transfer

Optical reader

Infra-red reader for logger with USB cable connection to PC - simple and inexpensive.



Leveloader Gold PDA

Field PDA for data collection and programming of loggers. Can also use a PC notebook or laptop



Suspension cable

Cord or Cable

Use non-stretch 2mm Kevlar Cord or 2mm Stainless Steel Cable for temporary suspension of loggers in boreholes.



Direct Read Cable

Use Direct Read cable for permanent suspension of loggers in boreholes. Enables data collection & programming without disturbance of the loggers.



Well caps and cradle

EnviroCap Well Caps

Low profile well cap for 2" and 4" monitoring boreholes with unique magnetic universal key and lock. Venting required for use with loggers.



Torquer Well Plugs

Well cap available in a wide range of diameters. Venting required for use with loggers.



Solinst Well Caps

For 2" and 4" monitoring boreholes. For suspending one or two loggers using Direct Read Cable. Incorporates a 16mm dia. access port to allow the use of a water level dip meter without disturbing the logger.



Suspension Cradle

Expandable temporary suspension cradle for use in 75mm to 200mm diameter wells



Levellogger Software

Simple, intuitive and reliable software for programming, data collection and compensation of logger data.

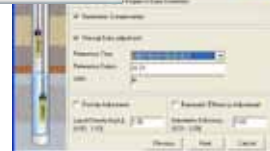


Programming



Retrieving Data

Data compensation



For further information please see the downloadable pdf data sheets on our website: PR06 - Sampling accessories; PR20 - Torquer well plugs; PR31 - EnviroCap well caps.

Mini Logger – Vented Cable Loggers For further information please see pdf data sheet PR24 on our website

Data transfer

PC Connection Cable

Direct connection from logger with USB cable connection to PC

Suspension cable

Vented Cable

Uses 6mm dia. PUR (Polyurethane) vented cable - specify length required for your application.

Software

Comprehensive software for programming and data collection.

